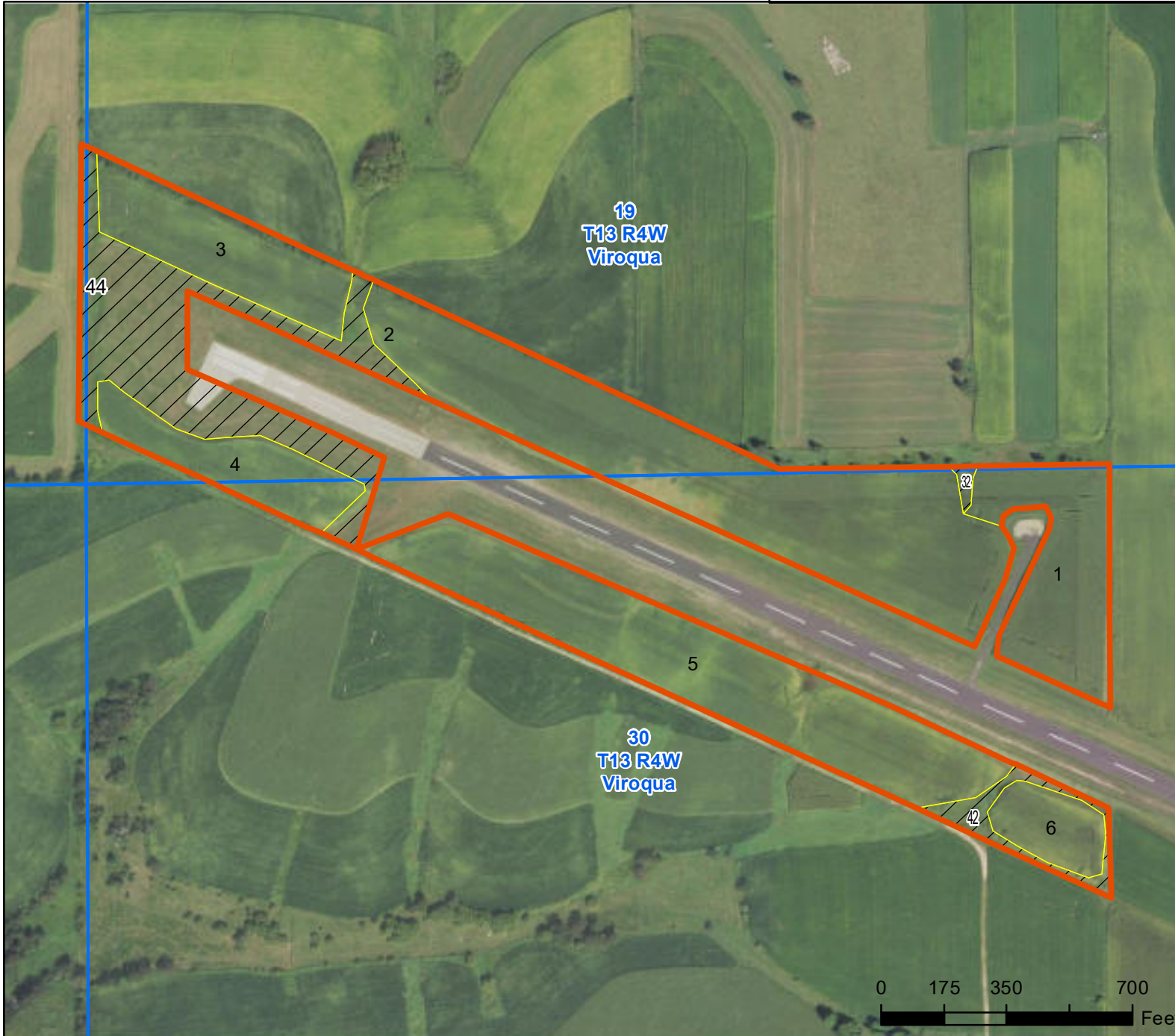


Farm 10385
Tract 10509
 2023 Program Year



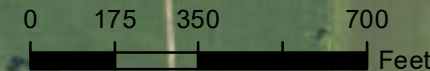
CLU	Acres	HEL	Crop
1	3.91	HEL	
2	11.61	HEL	
3	3.49	HEL	
4	2.46	HEL	
5	8.73	HEL	
6	1.33	HEL	
32	0.11	HEL	NC
42	0.82	UHEL	NC
44	6.13	UHEL	NC

Page Cropland Total: 31.53 acres

AG Land Parcel 1

Map Created October 16, 2022

- Common Land Unit**
- Cropland
 - Non-Cropland
 - Tract Boundary
 - PLSS
- NAIP Imagery 2020

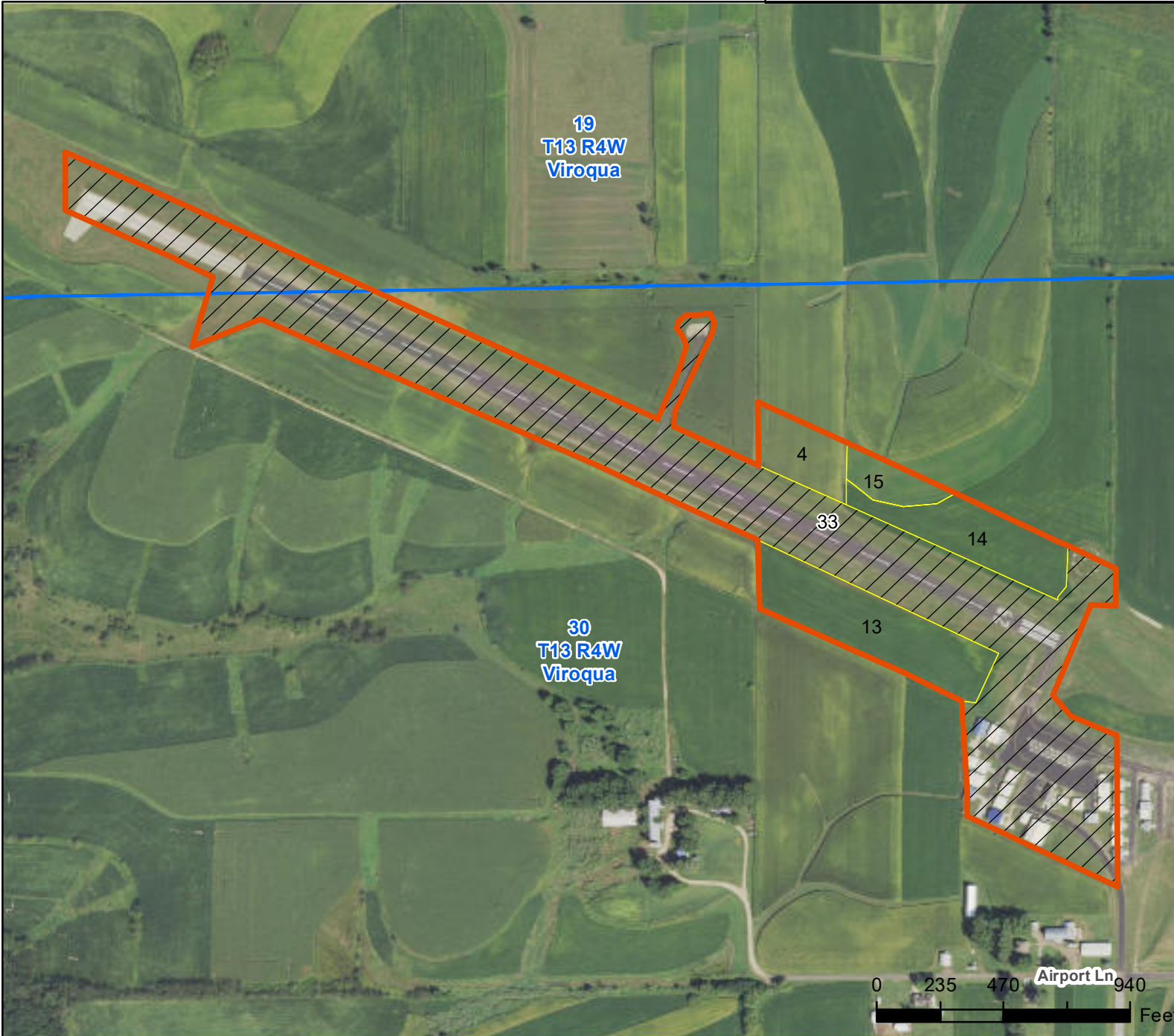


USDA FSA maps are for FSA Program administration only. This map does not represent a legal survey or reflect actual ownership; rather it depicts the information provided directly from the producer and/or the NAIP imagery. The producer accepts the data 'as is' and assumes all risks associated with its use. The USDA Farm Service Agency assumes no responsibility for actual or consequential damage incurred as a result of any user's reliance on this data outside FSA Programs. Wetland identifiers do not represent the size, shape, or specific determination of the area. Refer to your original determination (CPA-026 and attached maps) for exact boundaries and determinations or contact NRCS.

Farm 10387
Tract 10510
 2023 Program Year

CLU	Acres	HEL	Crop
4	1.75	UHEL	
13	4.67	HEL	
14	3.11	HEL	
15	1.08	HEL	
33	33.24	UHEL	NC

Page Cropland Total: 10.61 acres



Ag Land Parcel 2

Map Created October 16, 2022

- Common Land Unit**
- Cropland
 - Non-Cropland
 - Tract Boundary
 - PLSS
- NAIP Imagery 2020

USDA FSA maps are for FSA Program administration only. This map does not represent a legal survey or reflect actual ownership; rather it depicts the information provided directly from the producer and/or the NAIP imagery. The producer accepts the data 'as is' and assumes all risks associated with its use. The USDA Farm Service Agency assumes no responsibility for actual or consequential damage incurred as a result of any user's reliance on this data outside FSA Programs. Wetland identifiers do not represent the size, shape, or specific determination of the area. Refer to your original determination (CPA-026 and attached maps) for exact boundaries and determinations or contact NRCS.