

Keller

PLANNERS | ARCHITECTS | BUILDERS

FOX CITIES
N216 State Road 55
P.O. Box 620
Kaukauna, WI 54130
PHONE (920) 766-0795 / 1-800-236-2534
FAX (920) 766-5004

MADISON
711 Lois Drive
Sun Prairie, WI 53590
PHONE (608) 318-2336
FAX (608) 318-2337

MILWAUKEE
W204 N1509 Goldendale Road
Germanstown, WI 53022
PHONE (262) 250-9710
FAX (262) 250-9740

WAUSAU
5605 Lilac Ave
Wausau, WI 54401
PHONE (715) 849-3141
FAX (715) 849-3181

www.kellerbuilds.com

PROPOSED FIRE STATION FOR:
CITY OF VIROQUA
SITE PLAN
NELSON STREET
VIROQUA, WISCONSIN 54605

"COPYRIGHT NOTICE"
This design, drawing and detail is the copyrighted property of KELLER, INC. No part hereof shall be copied, duplicated, distributed, disclosed or made available to anyone without the expressed written consent of KELLER, INC.

REVISIONS
- 2024/01/02 90% PLAN SET

"NOT FOR CONSTRUCTION"
This document represents preliminary information about the owners requirements. Therefore DO NOT rely on or affirm constructability. Feasibility of the site or building development is not guaranteed. Using this document without the expressed consent of KELLER, INC. is prohibited.

PROJECT MANAGER: D.FLANIGAN

DESIGNER: B. HARTJES

IED PROJECT MANAGER: T. BAUMGARTNER

EXPEDITOR: T. FRICKE

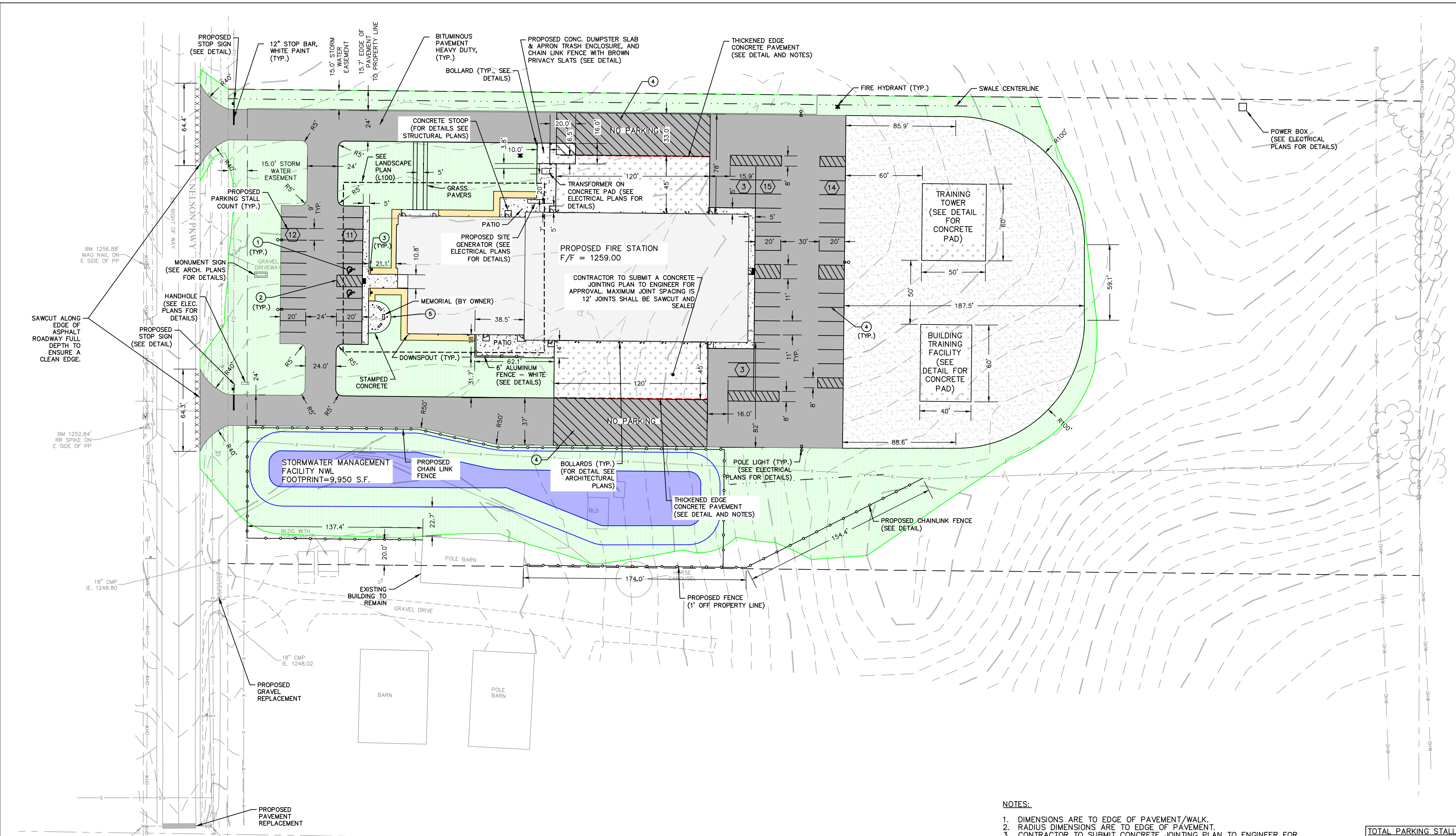
SUPERVISOR: D. CRAKER

CONTRACT NO.: -----

IED NO.: 23113

ISSUED DATE: DECEMBER 21, 2023

SHEET: C200



- NOTES:**
- DIMENSIONS ARE TO EDGE OF PAVEMENT/WALK.
 - RADIUS DIMENSIONS ARE TO EDGE OF PAVEMENT.
 - CONTRACTOR TO SUBMIT CONCRETE JOINTING PLAN TO ENGINEER FOR APPROVAL PRIOR TO CONCRETE INSTALLATION.
 - SEE STRUCTURAL SHEETS FOR LANDING STOOP DIMENSIONS AT EACH EGRESS POINT FROM THE BUILDING.
 - THICKENED EDGE CONCRETE PAVEMENT IS ONLY REQUIRED ALONG THE NORTH AND SOUTH SIDES OF THE CONCRETE PAVEMENT WHERE IT ABUTS THE ASPHALTIC PAVEMENT.
 - BOLLARDS ARE TO BE PLACED AROUND THE TRASH ENCLOSURE (3 EA.), TRANSFORMER CONC. PAD (2 EA.), AND GENERATOR PAD (2 EA.).

TOTAL PARKING STALLS

VISITOR STALLS =	23
HANDICAP ACCESSIBLE STALLS =	2
EMPLOYEE STALLS =	35

BUILDING AREA = 26,370 SF
PAVEMENT AREA = 56,480 SF
SIDEWALK AREA = 3,620 SF
LANDSCAPE/OPEN AREA = 189,371 SF

PROPOSED LEGEND

1	PAVEMENT MARKING ADA PARKING SYMBOL, BLUE (SEE DETAIL)	PROPOSED CONCRETE (SEE DETAIL)
2	PAVEMENT MARKING ACCESSIBLE AISLE, 4-INCH, WHITE (2" O.C. SPACING)	PROPOSED GRASS PAVERS (SEE DETAIL)
3	POST MOUNTED ADA SIGNAGE (SEE DETAIL)	PROPOSED HEAVY DUTY CONCRETE PAVEMENT (SEE DETAIL)
4	PAVEMENT MARKING, 4-INCH, YELLOW	PROPOSED HEAVY DUTY BITUMINOUS PAVEMENT (SEE DETAIL)
5	PROPOSED FLAG POLE LOCATION, INSTALL PER MANUFACTURER'S RECOMMENDATION, AMERICAN (30') STATE (25') CITY (25')	PROPOSED PERVIOUS AREA (TOPSOIL & SEED)
15	PROPOSED PARKING STALL COUNT	PROPOSED LANDSCAPING (SEE DETAIL)
○	PROPOSED SITE LIGHTING (SEE ELECTRICAL PLANS)	PROPOSED GRAVEL AREA (SEE DETAIL)
---	PROPOSED PROPERTY LINE	PROPOSED BUILDING FOOTPRINT
---	PROPOSED EASEMENT LINE	
---	PROPOSED CHAIN LINK FENCE (SEE DETAIL)	

EXISTING LEGEND

△ BENCHMARK	○ MARKED FIBER OPTIC	--- EDGE OF TREES
■ SECTION CORNER	⊠ GAS VALVE	--- SANITARY SEWER
● IRON PIPE FOUND	⊙ GAS METER	--- STORM SEWER
○ IRON PIPE SET	⊙ STORM MANHOLE	--- WATERMAIN
○ BOLLARD	⊙ STORM INLET	--- MARKED GAS MAIN
⊕ SOIL BORING/MONITORING WELL/CORE LOCATION	⊕ SQUARE INLET	--- MARKED ELECTRIC
⊕ FLAGPOLE	⊕ STORM SEWER END SECTION	--- OVERHEAD WIRES
⊕ MAILBOX	⊕ SANITARY MANHOLE	--- BUREAU ELEC. SERV.
⊕ SIGN	⊕ SANITARY CLEANOUT OR SEPTIC VENT	--- MARKED TELEPHONE
⊕ BILLBOARD	⊕ SANITARY INTERCEPTOR MANHOLE	--- MARKED CABLE TV LINE
⊕ CONTROL BOX	⊕ MISCELLANEOUS MANHOLE	--- MARKED FIBER OPTIC
⊕ TRAFFIC SIGNAL	⊕ WATER VALVE	--- FORCE MAIN
⊕ RAILROAD CROSSING SIGNAL	⊕ HYDRANT	
⊕ CABLE PEDESTAL	⊕ WATER SERVICE CURB STOP	
⊕ POWER POLE	⊕ WATER MANHOLE	
⊕ GUY POLE	⊕ WELL	
⊕ GUY WIRE	⊕ WATER SURFACE	
⊕ LIGHT POLE	⊕ WETLANDS FLAG	
⊕ GROUND OR OTHER SPOT SHOT	⊕ MARSH	
⊕ HANDICAPPED PARKING	⊕ CONIFEROUS TREE	
⊕ ELECTRIC MANHOLE	⊕ DECIDUOUS TREE	
⊕ ELECTRIC PEDESTAL	⊕ SHRUB	
⊕ ELECTRIC METER		
⊕ TELEPHONE MANHOLE		
⊕ TELEPHONE PEDESTAL		

811
Know what's below.
Call before you dig.

R.A.SMITH, INC. ASSUMES NO RESPONSIBILITY FOR DAMAGES, LIABILITY OR COSTS RESULTING FROM CHANGES OR ALTERATIONS MADE TO THIS PLAN WITHOUT THE EXPRESSED WRITTEN CONSENT OF R.A.SMITH, INC.

ALL COPYRIGHTS TO THESE DRAWINGS ARE RESERVED. THEY MAY NOT BE COPIED, CHANGED, OR ASSIGNED TO ANY THIRD PARTY IN ANY MANNER WITHOUT OBTAINING THE EXPRESSED WRITTEN PERMISSION OF R.A.SMITH, INC.

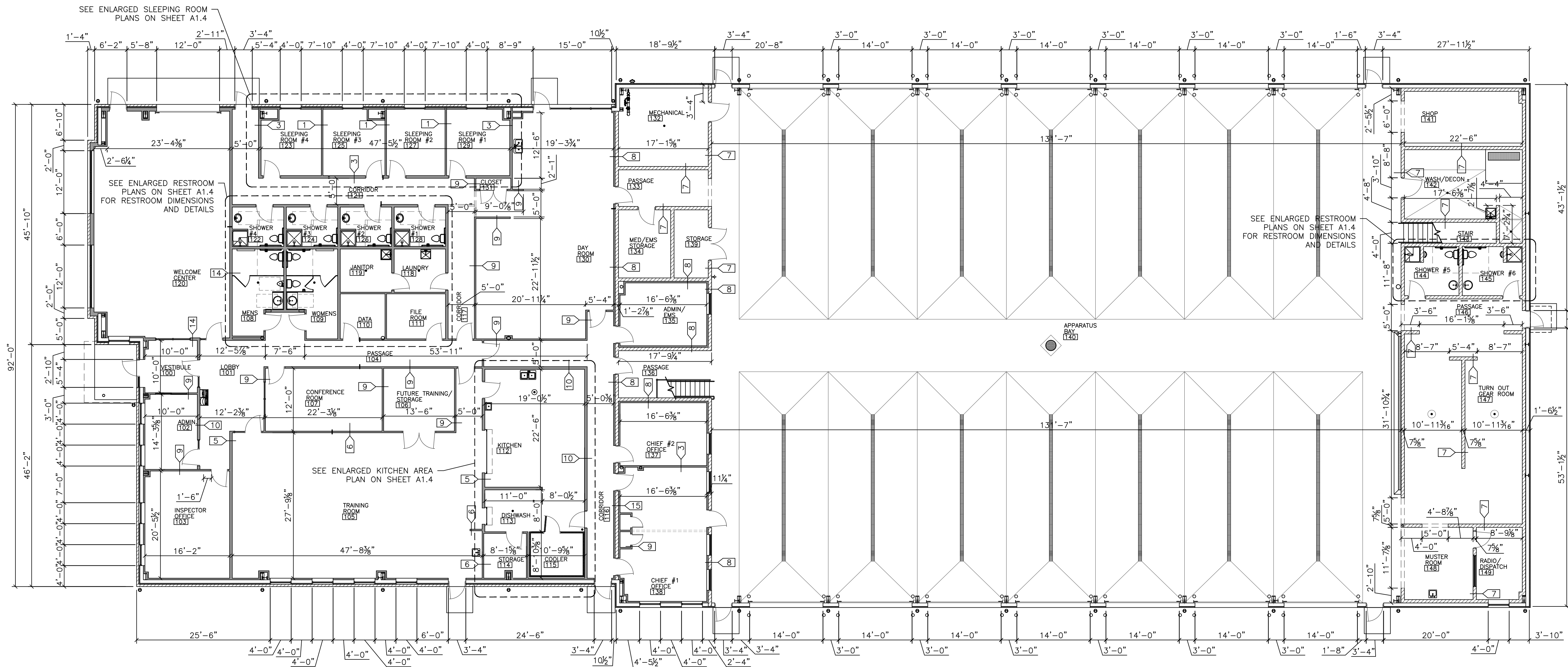
raSmith
CREATIVITY BEYOND ENGINEERING

100 West Lawrence Street, Suite 412
Appleton, WI 54911-5754
(920) 731-3499
rasmith.com

N:\23113\845\Drawings\Sheets\C200.dwg - SFD1_new.dwg - SITE PLAN, 1/19/2024 12:45:43 PM, mrv

WALL TYPE SCHEDULE

NO.	DESCRIPTION	WALL DIAGRAM
1	<p>5/8" GYP BOARD 3/8" 20GA METAL STUDS AT 16" O.C. BATT INSULATION 5/8" GYP BOARD</p> <p>1 HOUR RATED PER UL U419</p> <p>HEIGHT: 10'-0"</p>	
2	<p>(2) LAYERS 5/8" GYP BOARD 3/8" 20GA METAL STUDS AT 16" O.C. BATT INSULATION (2) LAYERS 5/8" GYP BOARD</p> <p>2 HOUR RATED PER UL U419</p> <p>HEIGHT: 10'-0"</p>	
3	<p>5/8" GYP BOARD WITH HORIZONTAL LADDER REINFORCING AT 16" O.C. 6" 20GA METAL STUDS AT 16" O.C. BATT INSULATION 5/8" GYP BOARD</p> <p>1 HOUR RATED PER UL U419</p> <p>HEIGHT: 10'-0"</p>	
4	<p>(2) LAYERS 5/8" GYP BOARD 6" 20GA METAL STUDS AT 16" O.C. BATT INSULATION (2) LAYERS 5/8" GYP BOARD</p> <p>2 HOUR RATED PER UL U419</p> <p>HEIGHT: 10'-0"</p>	
5	<p>5/8" GYP BOARD 6" 20GA METAL STUDS AT 16" O.C. BATT INSULATION 5/8" GYP BOARD</p> <p>HEIGHT: 12'-0"</p>	
6	<p>5/8" GYP BOARD 3/8" 20GA METAL STUDS AT 16" O.C. BATT INSULATION 5/8" GYP BOARD</p> <p>HEIGHT: 12'-0"</p>	
7	<p>8" CMU WITH HORIZONTAL LADDER REINFORCING AT 16" O.C. PER SPEC</p> <p>HEIGHT: 10'-8"</p>	
8	<p>8" CMU WITH HORIZONTAL LADDER REINFORCING AT 16" O.C. PER SPEC. 3/8" 20 GA. METAL STUDS AT 16" O.C. BATT INSULATION 5/8" GYPSUM BOARD</p> <p>HEIGHT: 10'-8"</p>	
9	<p>5/8" GYP BOARD 3/8" 20GA METAL STUDS AT 16" O.C. BATT INSULATION 5/8" GYP BOARD</p> <p>HEIGHT: 10'-0"</p>	
10	<p>5/8" GYP BOARD 6" 20GA METAL STUDS AT 16" O.C. BATT INSULATION 5/8" GYP BOARD</p> <p>HEIGHT: 10'-0"</p>	
11	<p>5/8" GYPSUM BOARD 3/8" 20 GA. METAL STUDS AT 16" O.C. BATT INSULATION HORIZONTAL STEEL STRAPS AT 5'-0" O.C. LINER PANEL</p> <p>HEIGHT: FULL HEIGHT</p>	
12	<p>3/8" 20 GA. METAL STUDS AT 16" O.C. BATT INSULATION HORIZONTAL STEEL STRAPS AT 5'-0" O.C. LINER PANEL</p> <p>HEIGHT: FULL HEIGHT</p>	
13	<p>8" CMU WITH HORIZONTAL LADDER REINFORCING AT 16" O.C. PER SPEC</p> <p>HEIGHT: FULL HEIGHT</p>	
14	<p>5/8" GYP BOARD 6" 20GA METAL STUDS AT 16" O.C. BATT INSULATION 5/8" GYP BOARD</p> <p>HEIGHT: FULL HEIGHT</p>	
15	<p>5/8" GYPSUM BOARD BATT INSULATION 3/8" 20 GA. METAL STUDS AT 16" O.C. 8" CMU WITH HORIZONTAL LADDER REINFORCING AT 16" O.C. PER SPEC. 3/8" 20 GA. METAL STUDS AT 16" O.C. BATT INSULATION 5/8" GYPSUM BOARD</p> <p>HEIGHT: 10'-8"</p>	
16	<p>5/8" GYP BOARD 6" 20GA METAL STUDS AT 16" O.C. BATT INSULATION 5/8" GYP BOARD</p> <p>HEIGHT: FULL</p>	



ROOM DIMENSIONS AND WALL TYPES
SCALE: 3/32"=1'-0"



NOTE:
EXTERIOR CONCRETE PER CIVIL PLANS

WALL TYPE SYMBOL
SEE WALL TYPE SCHEDULE ON THIS SHEET

Keller
PLANNERS | ARCHITECTS | BUILDERS
FOX CITIES: N216 State Road 55, Kaukauna, WI 54130
MADISON: 711 Lois Drive, Sun Prairie, WI 53590
MILWAUKEE: W204 N11509 Goldendale Road, Germantown, WI 53022
WAUSAU: 5605 Lilac Ave, Wausau, WI 54401
www.kellerbuilds.com

PROPOSED FIRE STATION FOR:
CITY OF VIROQUA
NELSON STREET VIROQUA, WISCONSIN 54665

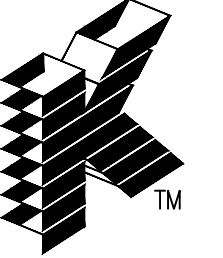
"COPYRIGHT NOTICE"
This design, drawing and detail is the copyrighted property of KELLER, INC. No part hereof shall be copied, duplicated, distributed, disclosed or made available to anyone without the expressed written consent of KELLER, INC.

REVISIONS

"NOT FOR CONSTRUCTION"
This document represents preliminary information about the owners requirements. Therefore Do NOT rely on or affirm constructability. Feasibility of the site or building development is not guaranteed. Using this document without the expressed consent of KELLER, INC. is prohibited.

PROJECT MANAGER: D.FLANIGAN
DESIGNER: B. ANDERSON
IED PROJECT MANAGER: T. BAUMGARTNER
EXPEDITOR: T. FRICKE
SUPERVISOR: D. CRAKER
CONTRACT NO: -----
IED NO: 23113

ISSUED DATE: NOVEMBER 1, 2023
SHEET: A1.1



Keller

PLANNERS | ARCHITECTS | BUILDERS

FOX CITIES
N216 State Road 55
P.O. Box 620
Kaukauna, WI 54130
PHONE (920) 766-5795 /
1-800-236-2534
FAX (920) 766-5004

MADISON
711 Lois Drive
Sun Prairie, WI 53590
PHONE (608) 318-2336
FAX (608) 318-2337

MILWAUKEE
W204 N11509 Goldendale Road
Germantown, WI 53022
PHONE (262) 260-9710
1-800-236-2534
FAX (262) 260-9740

WAUSAU
5605 Lilac Ave
Wausau, WI 54401
PHONE (715) 849-3141
FAX (715) 849-3181

www.kellerbuilds.com

PROPOSED FIRE STATION FOR:

CITY OF VIROQUA

NELSON STREET
VIROQUA, WISCONSIN 54665

"COPYRIGHT NOTICE"
This design, drawing and detail is the copyrighted property of KELLER, INC. No part hereof shall be copied, duplicated, distributed, disclosed or made available to anyone without the expressed written consent of KELLER, INC.

REVISIONS

"NOT FOR CONSTRUCTION"
This document represents preliminary information about the owners requirements. Therefore DO NOT imply or affirm constructability. Feasibility of the site or building development is not guaranteed. Using this document without the expressed consent of KELLER, INC. is prohibited.

PROJECT MANAGER: D.FLANIGAN

DESIGNER: B. ANDERSON

IED PROJECT MANAGER: T. BAUMGARTNER

EXPEDITOR: T. FRICKE

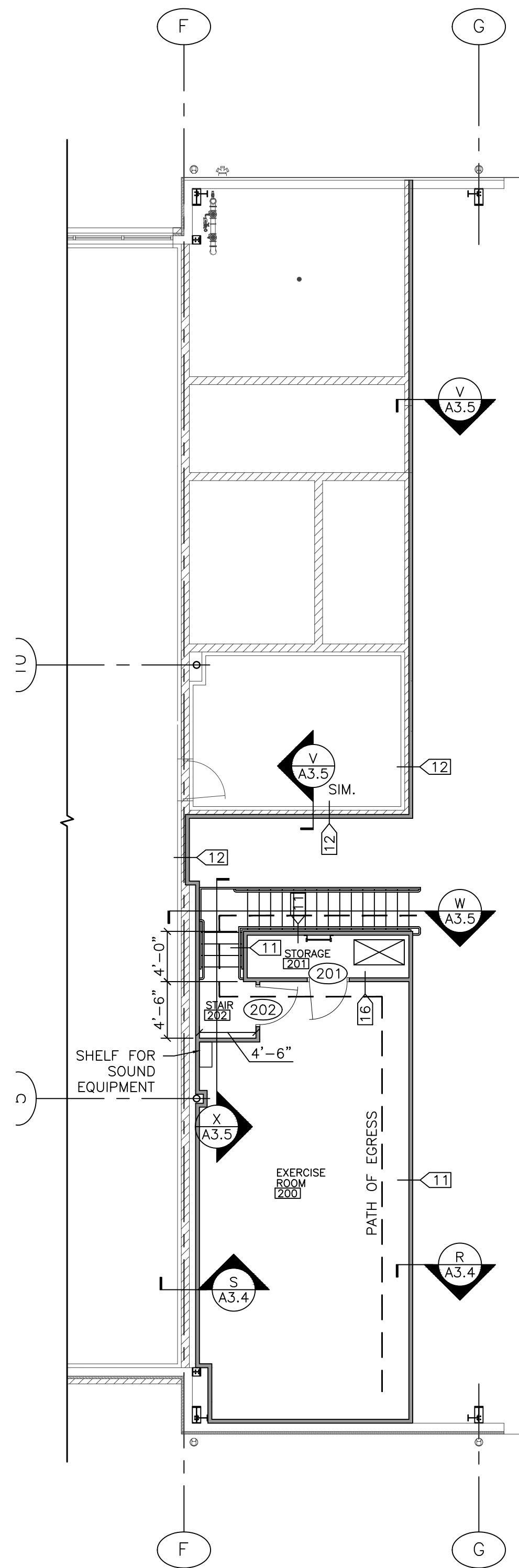
SUPERVISOR: D. CRAKER

CONTRACT NO: -----

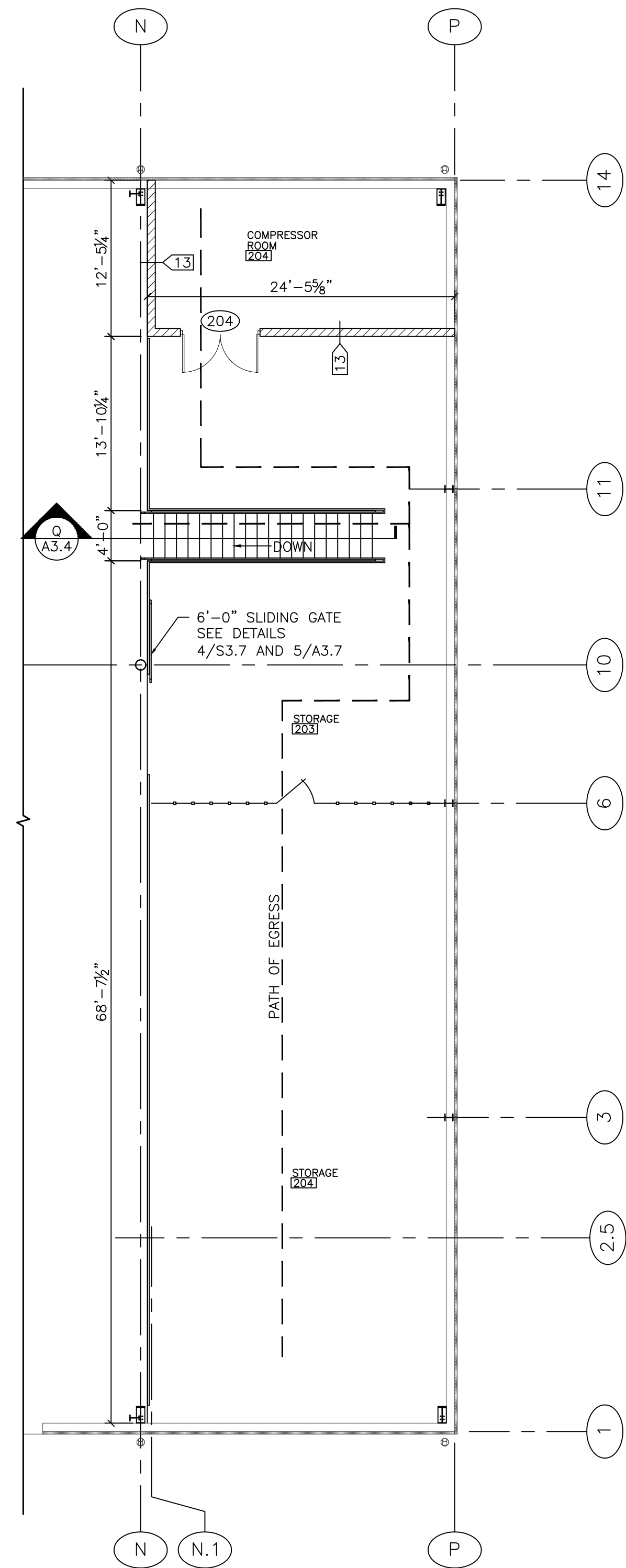
IED NO: 23113

ISSUED DATE: NOVEMBER 1, 2023

SHEET: **A1.2**

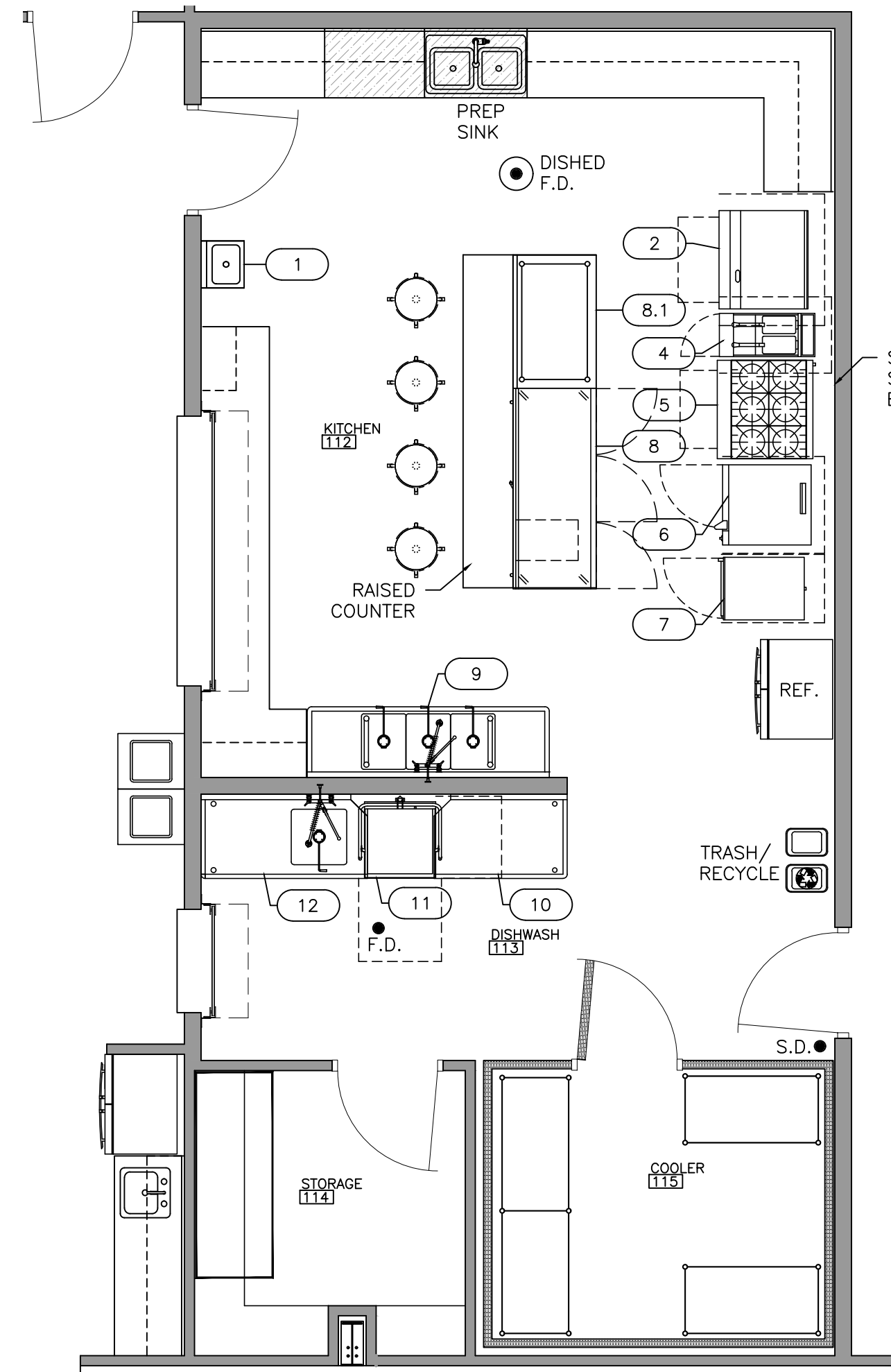


PARTIAL SECOND FLOOR PLAN AND PATH OF EGRESS
SCALE: 1/8"=1'-0"



PARTIAL SECOND FLOOR PLAN AND PATH OF EGRESS
SCALE: 1/8"=1'-0"

WALL TYPE SYMBOL
SEE WALL TYPE SCHEDULE
ON SHEET A1.1

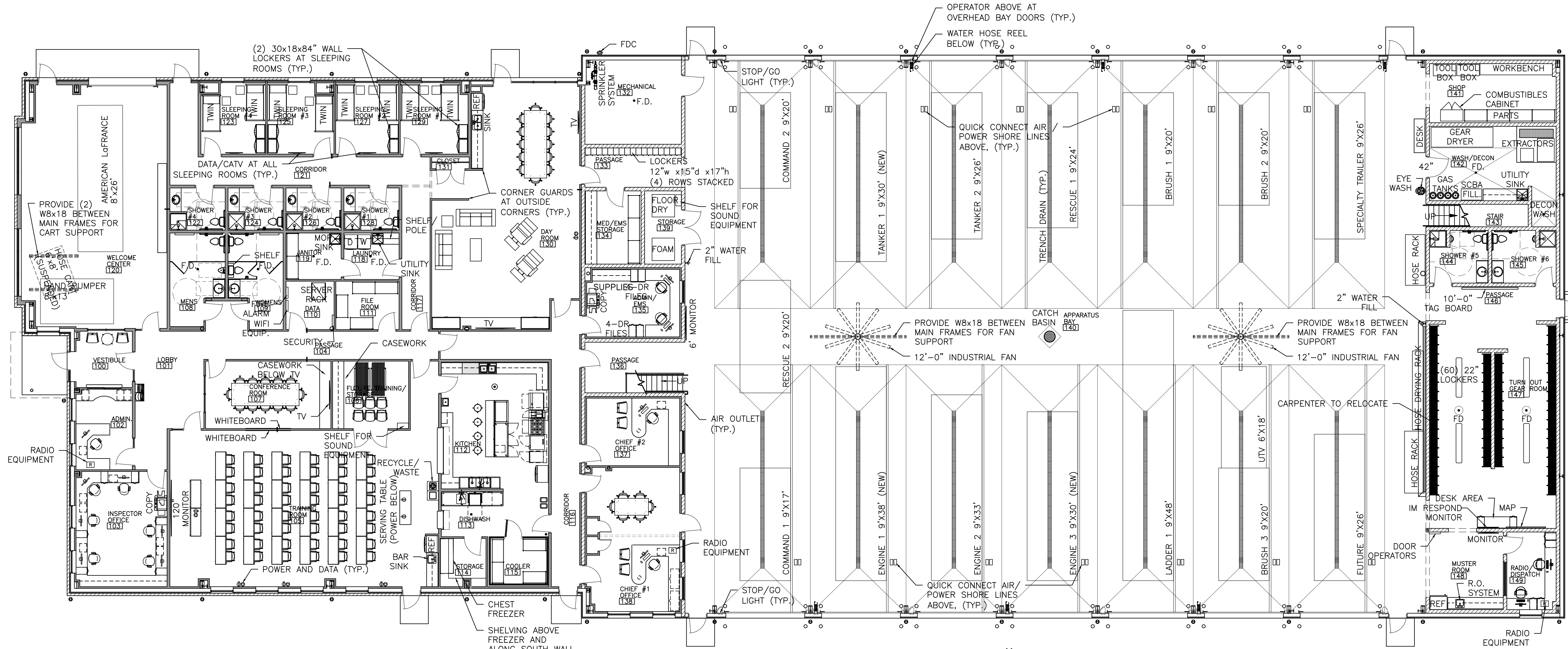


EQUIPMENT SCHEDULE			
ItemNo	Quantity	Unit	Category
1	1	ea	Hand Sink
2	1	ea	Griddle, Gas, Countertop
3	1	ea	Equipment Stand
4	1	ea	Gas Floor Fryer
5	1	ea	Range, 36", 6 Open Burners
6	2	ea	Convection Oven, Gas
7	1	ea	Cabinet, Cook / Hold / Oven
8	1	ea	Undercounter Refrigerator
8.1	1	ea	Stainless Steel Table
9	1	ea	Three (3) Compartment Sink
10	1	ea	Clean Dishtable
11	1	ea	Dishwasher, Door Type
12	1	ea	Solled Dishtable

KITCHEN AREA FURNITURE, FIXTURE, AND EQUIPMENT PLAN
SCALE: 1/4" = 1'-0"

OWNER PROVIDED ITEMS	
- OXYGEN COMPRESSOR	- WASHER/DRYER IN LAUNDRY ROOM
- ALL APPLIANCES	- TOOL BOXES IN SHOP
- COMPUTERS	- SHELVING IN SHOP
- TELEVISIONS	- HOSE RACK IN APPARATUS BAY
- BEDS	- HOSE DRYING RACK APPARATUS BAY
- COPY MACHINE	- 40 EXISTING READY RACKS
- COFFEE MAKERS	- WHITE BOARDS
- PHONE AND INTERNET PROVIDER	- SHELVING IN FILE ROOM
- RADIO EQUIPMENT ON ROOF	- SHELVING IN EMS STORAGE
- SOUND SYSTEM AND SPEAKERS	- BENCHES IN TURNOUT GEAR
- REFRIGERATORS	

THIS LIST IS NOT INTENDED TO BE ALL INCLUSIVE.



FURNITURE, FIXTURE, AND EQUIPMENT PLAN
SCALE: 3/32" = 1'-0"

Keller
PLANNERS | ARCHITECTS | BUILDERS

FOX CITIES
N216 State Road 55
P.O. Box 620
Kaukauna, WI 54130
PHONE (920) 766-5795 / 1-800-236-2534
FAX (920) 766-5004

MADISON
711 Lois Drive
Sun Prairie, WI 53590
PHONE (608) 318-2336
FAX (608) 318-2337

MILWAUKEE
W204 N11509 Goldendale Road
Germantown, WI 53022
PHONE (262) 260-9710
1-800-236-2534
FAX (262) 260-9740

WAUSAU
5605 Lilac Ave
Wausau, WI 54401
PHONE (715) 849-3141
FAX (715) 849-3181

www.kellerbuilds.com

PROPOSED FIRE STATION FOR:

CITY OF VIROQUA
NELSON STREET
VIROQUA, WISCONSIN 54665

"COPYRIGHT NOTICE"
This design, drawing and detail is the copyrighted property of KELLER, INC. No part hereof shall be copied, duplicated, distributed, disclosed or made available to anyone without the expressed written consent of KELLER, INC.

REVISIONS

NO.	DESCRIPTION

"NOT FOR CONSTRUCTION"
This document represents preliminary information about the owners requirements. Therefore DO NOT rely on or affirm constructability. Feasibility of the site or building development is not guaranteed. Using this document without the expressed consent of KELLER, INC. is prohibited.

PROJECT MANAGER: D.FLANIGAN

DESIGNER: B. ANDERSON

IED PROJECT MANAGER: T. BAUMGARTNER

EXPEDITOR: T. FRICKE

SUPERVISOR: D. CRAKER

CONTRACT NO: -----

IED NO: 23113

ISSUED DATE: NOVEMBER 1, 2023

SHEET: **A1.3**



CITY OF VIROQUA - FIRE DEPARTMENT

VIROQUA,

WISCONSIN